

PHILOSOPHY

Our children come first.

We believe in empowering parents.

Our community must support the educational needs of all children.

The best way to help parents be heard, is to let them know we are listening.

We can best serve our children when we foster positive relationships between families, school districts, and our community.

WHO WE ARE

The CAC of North Santa Cruz County is composed of volunteer parents, educators, and other interested community members who want to make a difference in the education of all our children. Your CAC seeks to join together parents, educators, lawmakers, service providers, and others in our community with the goal of improving and protecting the education of our children with disabilities. Your CAC is here to inform, empower, and support you. We invite you to join us in our quest to help others in our community.

WHAT WE DO

California State Law mandates that the CAC serve as an advisory body to the Governance Council and the North Santa Cruz County Special Education Local Plan Area (SELPA) Director, regarding the development and review of the Local Plan as well as any policy additions or revisions. Additional duties include assisting in parent education and in recruiting parents and other volunteers to support activities on behalf of individuals with disabilities. District representative members also have the responsibility of forwarding pertinent information from the CAC to their local boards and to assist in parent awareness of the importance of school attendance.

MEMBERSHIP

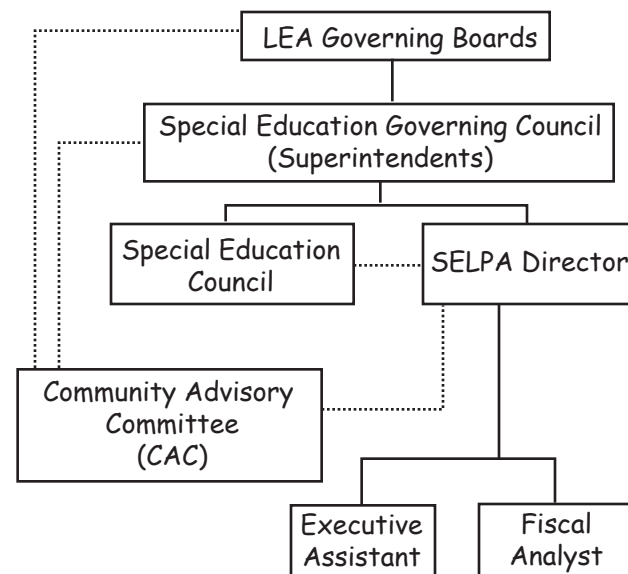
Although all events and meetings are open to everyone, voting members are appointed and approved by the school board of each district. The majority of the voting membership must be comprised of parents of children with disabilities enrolled in public or private schools within the North Santa Cruz County SELPA. Contact your district administrator or the SELPA office for more information on membership.

MEETINGS

The CAC holds a meeting once a month. General business meetings are held every two months. On the alternate month the CAC offers workshops regarding special education topics which often include guest speakers. All meetings and workshops are free of charge and are open to everyone, including parents of children with and without disabilities, educators, and agency representatives. For current scheduling information visit the SELPA website at: www.nscselpa.org, and follow the links to the CAC.

THE BIG PICTURE

North Santa Cruz County SELPA Governance



KNOWLEDGE IS POWERFUL

Here's how to stay up-to-date on CAC meetings, workshops, and other activities:

- Visit the SELPA website at: www.nscselpa.org
- Ask your school service coordinator for assistance.
- Call the SELPA office at (831) 466-5700

ACRONYM TABLE A - I*

ADD	Attention Deficit Disorder
ADHD	Attention Deficit Hyperactivity Disorder
APE	Adapted Physical Education
ASD	Autism Spectrum Disorder
ASL	American Sign Language
AUT	Autism
BICM	Behavior Intervention Case Manager
CAC	Community Advisory Committee
CAHSEE	California High School Exit Exam
CAPA	California Alternate Performance Assessment
CCS	California Children's Services CPCerebral Palsy
CMH	County Mental HealthDBDeaf-Blindness
DIS	Designated Instruction and Service
ED	Emotionally Disturbed
FAPE	Free and Appropriate Public Education
HI	Hearing Impaired
HOH	Hard of Hearing
ID	Intellectual Disability
IDEA '97	Individuals With Disabilities Education Act
IDEIA '04	Individuals With Disabilities Improvement Education Act
IEP	Individualized Education Program
IFSP	Individual Family Service Plan
IPP	Individual Personalized Program
ITP	Individual Transition Plan

ACRONYM TABLE L - Z*

LEA	Local Education Agency
LH	Learning Handicapped
LRE	Least Restrictive Environment
LSH	Language, Speech and Hearing Specialist
MD	Multiple Disabilities
NSH	Non-Severely Handicapped(includes LH)
OCD	Obsessive-Compulsive Disorder
OI	Orthopedically Impaired
OHI	Other Health Impaired
OT	Occupational Therapy
PT	Physical Therapy
RSP	Resource Specialist Program
SARC	San Andreas Regional Center
SEE	Signed Exact English
SELPA	Special Education Local Plan Area
SH	Severely Handicapped
SLI	Speech Language Impairment
SLD	Specific Learning Disability
SLP	Speech Language Pathologist
SPED	Special Education
SST	Student Success Team
TBI	Traumatic Brain Injury
VI	Visually Impaired

* partial acronym list

COMMUNITY ADVISORY COMMITTEE OF NORTH SANTA CRUZ COUNTY SELPA

CAC

831-466-5700
www.nscselpa.org

