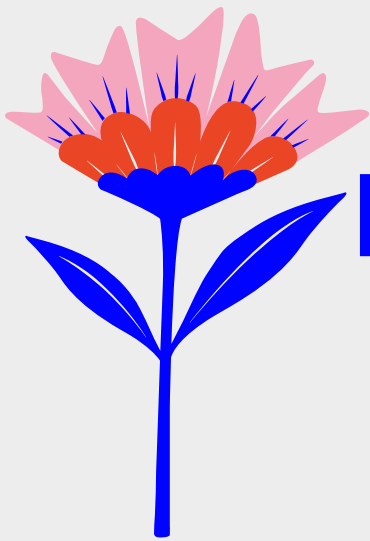


2020-2021



# NSCC SELPA PROFESSIONAL DEVELOPMENT SERIES

08/27/2020 2:00pm Creating an Effective Behavior Intervention Plan:  
Writing a plan with appropriate replacement behaviors and reinforcement  
systems

09/08/2020 2:00pm CA Dyslexia Guide lines - Next Steps

09/10/2020 2:00pm Universal Design for Learning (U DL) in the age of MTSS

09/16/2020 2:00pm What's Language Got to do with it

09/21/2020 2:00pm ERMHS Assessment: Examining Your Social-Emotional  
Data

09/24/2020 2:00pm The Impact of Trauma at School: Better Understanding  
Recognition, Assessment and Support for Students with Trauma-Related  
Challenges

10/12/2020 2:00pm When They Don't Show Up Dealing with School Avoidance

10/13/2020 2:00pm Projective Assessment: Diving deeper

NORTH SANTA CRUZ COUNTY SELPA  
400 ENCINAL STREET, SANTA CRUZ, CA 95060  
831-466-5700

QUESTIONS: [YBROOKS@SANTACRUZCOE.ORG](mailto:YBROOKS@SANTACRUZCOE.ORG)

TO REGISTER: CLICK ON THE TEXT