

PHILOSOPHY

Our children come first.

We believe in empowering parents.

Our community must support the educational needs of all children.

The best way to help parents be heard, is to let them know we are listening.

We can best serve our children when we foster positive relationships among families, school districts, and our community.

WHO WE ARE

The CAC of North Santa Cruz County is composed of volunteer parents, educators, and other interested community members who want to make a difference in the education of all our children. Your CAC seeks to join together parents, educators, lawmakers, service providers, and others in our community with the goal of improving and protecting the education of our children with special needs. Your CAC is here to inform, empower, and support you. We invite you to join us in our quest to help others in our community.

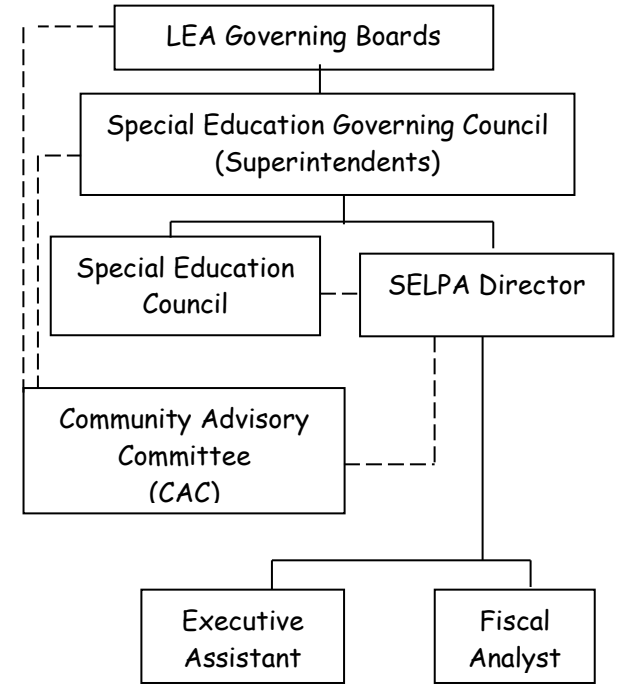
WHAT WE DO CA State Law mandates that the CAC serve as an advisory body to the Governance Council and the North Santa Cruz County Special Education Local Plan Area (SELPA) Director regarding the development and review of the Local Plan, as well as any policy additions or revisions. Additional duties include assisting in parent education and in recruiting parents and other volunteers to support activities on behalf of individuals with exceptional needs. District representatives also have the responsibility of forwarding pertinent information from CAC to their local boards & to assist in parent awareness of the importance of school attendance.

MEMBERSHIP Although all events and meetings are open to everyone, voting members are appointed and approved by the school board of each district. The majority of the voting membership must be comprised of parents of children with disabilities enrolled in public or private schools within the North Santa Cruz County SELPA. Contact your district administrator or the SELPA office for more information on membership.

MEETINGS The CAC holds meetings and workshops throughout the year. General business meetings are held every two months and on the alternate month the CAC offers workshops regarding special education topics which often include guest speakers. All meetings and workshops are free of charge and are open to everyone, including parents of children with and without disabilities, educators, agency representatives and community partners. For current scheduling information visit the SELPA website at: www.nscselpa.org, and follow the links to the CAC.

THE BIG PICTURE

North Santa Cruz County Special Education Local Plan Area (SELPA) Governance



KNOWLEDGE IS POWERFUL

Here's how to stay up to date on CAC meetings, workshops, and other activities:

- Visit the SELPA website at: www.nscselpa.org
- Ask your school service coordinator for assistance.
- Call the SELPA office at (831) 466-5700

ACRONYM TABLE A - I*

ADD Attention Deficit Disorder
ADHD Attention Deficit Hyperactivity Disorder
APE Adapted Physical Education
ASD Autism Spectrum Disorder
ASL American Sign Language
AUT Autism
CAC Community Advisory Committee
CAHSEE California High School Exit Exam
CAPA California Alternate Performance Assessment
CCS California Children's Services
CMH County Mental Health
DB Deaf-Blindness
DIS Designated Instruction and Service
ED Emotional Disturbance
FAPE Free and Appropriate Public Education
HI Hearing Impaired
HOH Hard of Hearing
ID Intellectual Disability
IDEA '04 Individuals With Disabilities Education Act
IEP Individualized Education Program
IFSP Individual Family Service Plan
IPP Individual Personalized Program

ACRONYM TABLE L - Z*

LEA Local Education Agency
LH Learning Handicapped
LRE Least Restrictive Environment
LSH Language, Speech and Hearing Specialist
MD Multiple Disabilities
OCD Obsessive-Compulsive Disorder
OI Orthopedically Impaired
OHI Other Health Impaired
OT Occupational Therapy
PT Physical Therapy
RSP Resource Specialist Program
SARC San Andreas Regional Center
SEE Signed Exact English
SELPA Special Education Local Plan Area
SH Severely Handicapped
SLI Speech Language Impairment
SLD Specific Learning Disability
SLP Speech Language Pathologist
SPED Special Education
SST Student Study Team
TBI Traumatic Brain Injury
VI Visually Impaired

* partial acronym list

CAC Community Advisory Committee of North Santa Cruz County SELPA



(831) 466-5700